

MOTOMAN MH12, MH12F

Handling & General Applications with the MH-series

The flexible, high speed 6-axis robot MOTOMAN MH12, MH12F with its payload up to 12 kg is newly added to the YASKAWA product line MOTOMAN MH-series. By realising the highest motion performance in its class, YASKAWA is contributing to the productivity development.



The hollow shaft structure is adopted to the upper-arm. By storing the cables in the arm, operation restriction due to the cable interference is reduced. Therefore, maintainability such as simplifying of the robot teaching operation or eliminating of the cable disconnection problems, etc. is improved.

Stream-lined structure adopted to the new type arc welding purpose robot is also applied to this multipurpose-applicable robot. And this adoption contributes to reduce the interference area between the jigs and work pieces. Superior performance can be delivered in handling operations which requires for example the rotation of large-sized work pieces.

The Servo-Float function enables, for example in plastic injection moulding machines, safely handling of work pieces which are pushed back by the ram, including the arm of the robot.

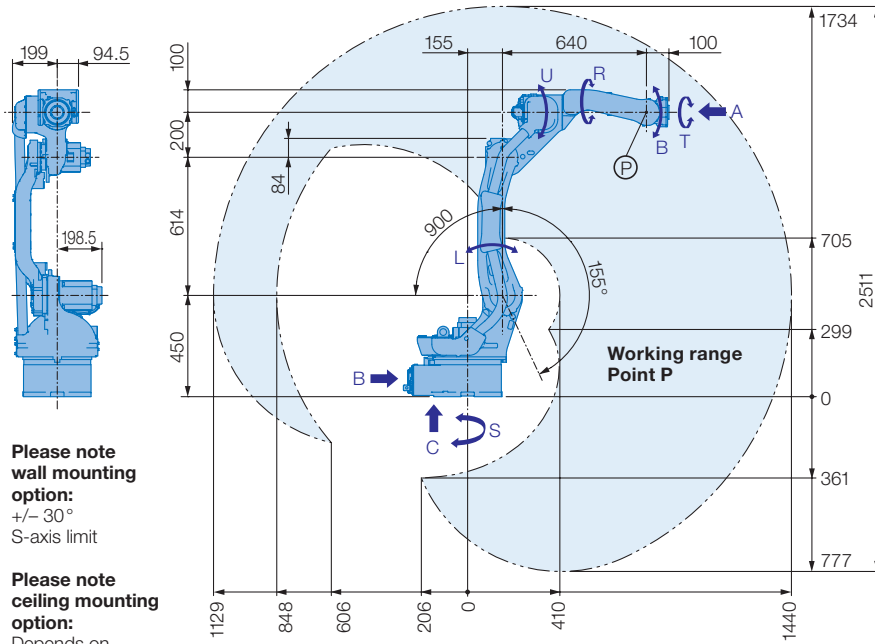
KEY BENEFITS

- Expanded diameter of hollow wrist (50 mm)
- Fast and powerful (max. payload 12 kg)
- Reduced interference due to internal cable wiring
- Servo float possible
- Stream-lined structure
- Easy maintenance

Controlled by
FS100

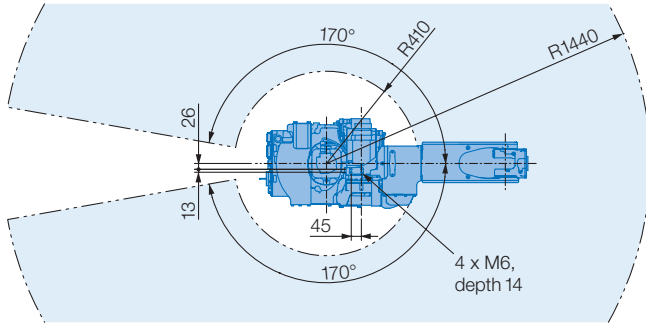
Controlled by
DX200

MOTOMAN MH12, MH12F

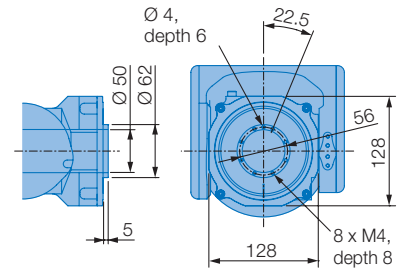


Please note wall mounting option: +/- 30° S-axis limit

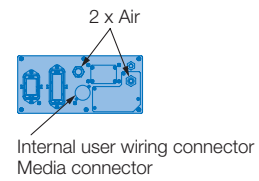
Please note ceiling mounting option: Depends on B-axis position



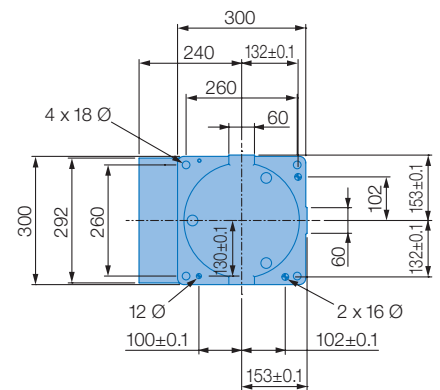
View A



View B



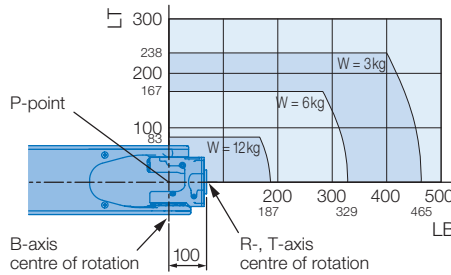
View C



Mounting options: Floor, wall, ceiling

All dimensions in mm | Technical data may be subject to change without previous notice | Please request detailed drawings at robotics@yaskawa.eu.com - YR-MA1440/MH12-A00, B-06-2015, A-No. 163283

Allowable wrist load



Specifications MH12, MH12F

Axes	Maximum motion range [°]	Maximum speed [°/sec.]	Allowable moment [Nm]	Allowable moment of inertia [kg · m ²]	Controlled axes	
					Max. payload [kg]	
S	±170	220	-	-	6	
L	+155/-90	200	-	-	12	
U	+240/-175	220	-	-	±0.08	Repeat. pos. accuracy [mm]
R	±180	410	22	0.65	1440	Max. working range R [mm]
B	±135	410	22	0.65	0 to +45	Temperature [°C]
T	±360	610	9.8	0.17	20 - 80	Humidity [%]
					130	Weight [kg]
					1.5	Power supply, average [KVA]

YASKAWA

robotics@yaskawa.eu.com
www.yaskawa.eu.com

YASKAWA Headquarters

YASKAWA Europe GmbH · Robotics Division
Yaskawastraße 1 · D-85391 Allershausen
Tel. +49 (0) 8166/90-0 · Fax +49 (0) 8166/90-103

YASKAWA academy and sales office Frankfurt

YASKAWA Europe GmbH · Robotics Division
Hauptstraße 185 · D-65760 Eschborn
Tel. +49 (0) 6196/77725-0 · Fax +49 (0) 6196/77725-39